

NOTE:
 1. COIL WIDTH:
 11 3/4" [298mm] to 11 7/8" [302mm]
 2. DUAL DIMENSIONS: Inch [mm]
 3. SEE MG5-SB5 FOR ADDITIONAL
 DIMENSIONS.

MATERIAL
 PAINTED STEEL/PAINTED
 ALUMINUM/COPPER

PART NUMBER
 MG5-BB5

PART NAME
 5" K STYLE GUTTER PROFILE
 BOTTOM BEAD

EP FABTECH METALS MFG

1381 DARRINGTON RD. SUITE C
 EL PASO, TEXAS

(915)-775-3539
 79928

Job Name:

Job Location:

SCALE: N.T.S.

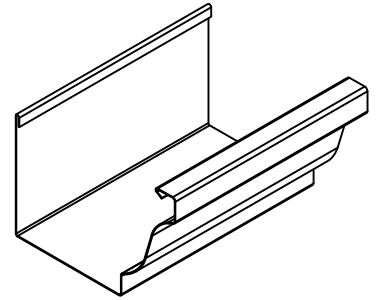
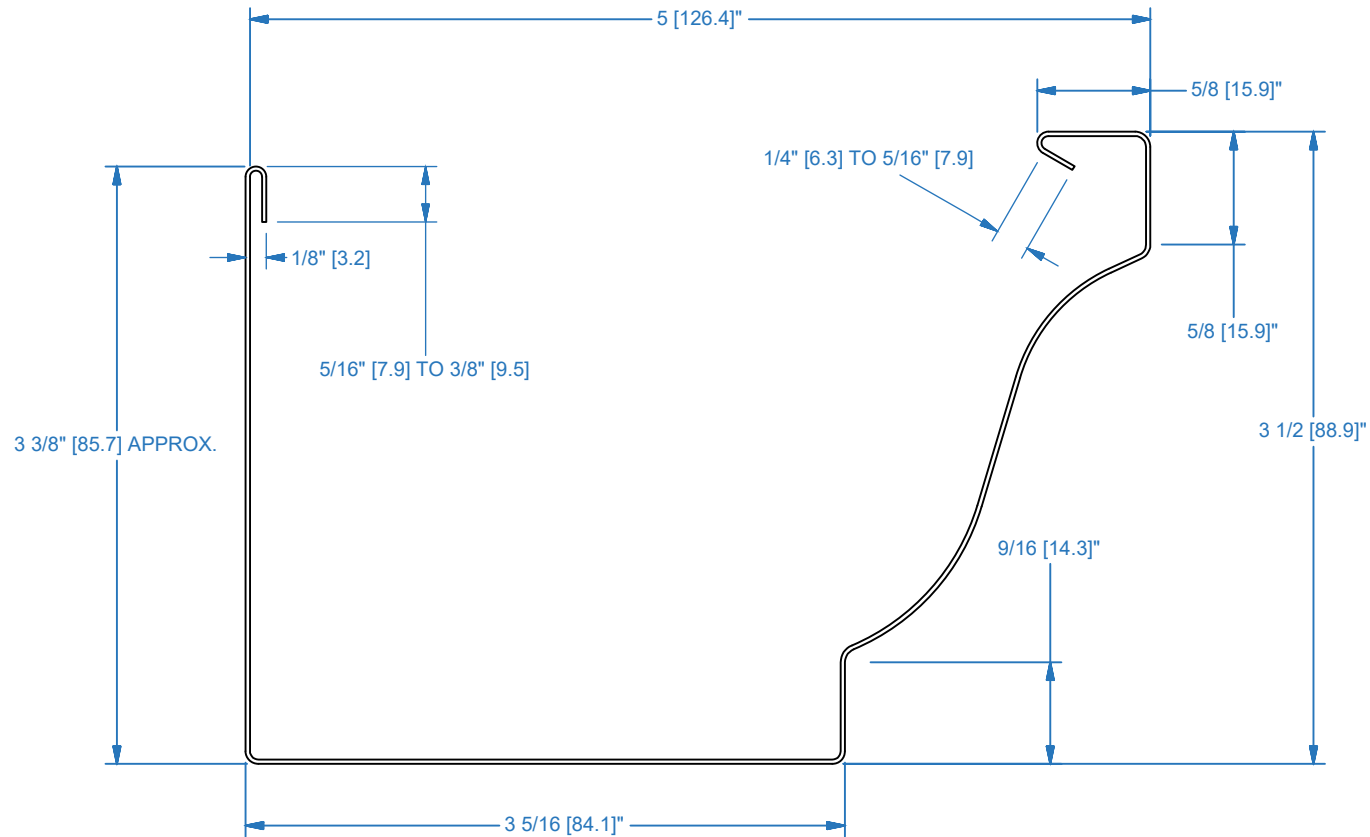
DATE: 11/13/2023

DRAWN BY: RC

Purchaser:

SHT. #1





NOTE:

1. COIL WIDTH:
11 3/4" [298mm] to 11 7/8" [302mm]
2. DUAL DIMENSIONS: Inch [mm]

MATERIAL

PAINTED STEEL/PAINTED
ALUMINUM/COPPER

PART NUMBER

MG5-HK5

PART NAME

5" K STYLE GUTTER PROFILE
W/HOOK

EP FABTECH METALS MFG

1381 DARRINGTON RD. SUITE C
EL PASO, TEXAS

(915)-775-3539
79928

Job Name:

Job Location:

SCALE: N.T.S.

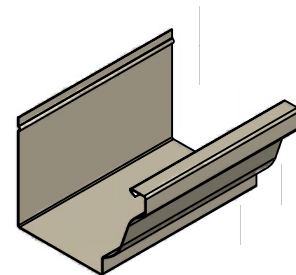
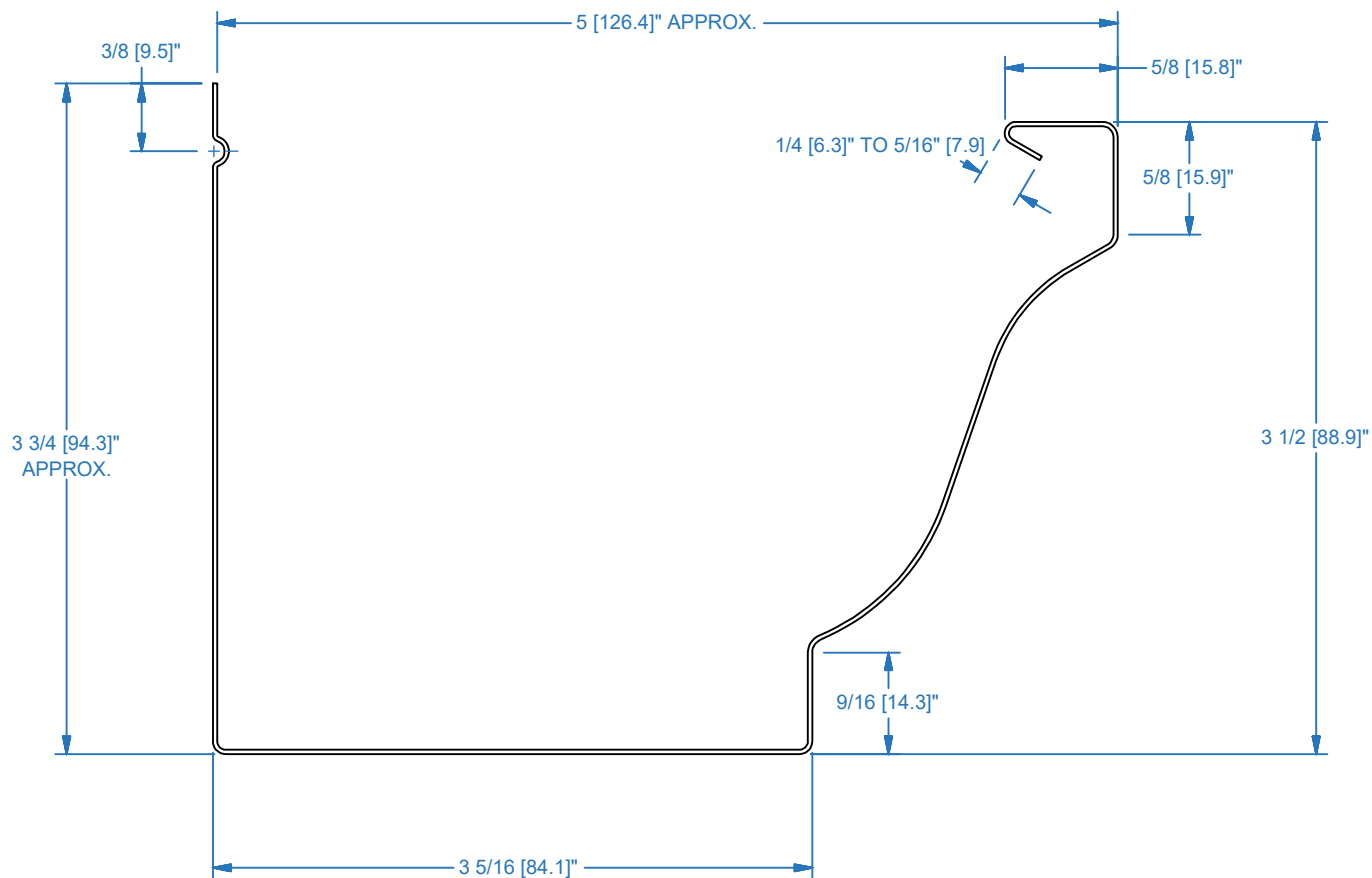
DATE: 11/13/2023

DRAWN BY: RC

Purchaser:

SHT. #1





NOTE:

1. COIL WIDTH:
11 3/4" [298mm] to 11 7/8" [302mm]
2. DUAL DIMENSIONS: Inch [mm]

MATERIAL

PAINTED STEEL/PAINTED
ALUMINUM/COPPER

PART NUMBER

MG5-SB5

PART NAME

**5" K STYLE GUTTER PROFILE
STRAIGHT BACK**

EP FABTECH METALS MFG

1381 DARRINGTON RD. SUITE C
EL PASO, TEXAS

(915)-775-3539
79928

Job Name:

Job Location:

SCALE: N.T.S.

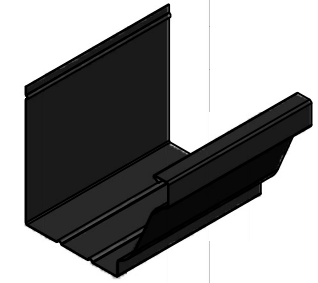
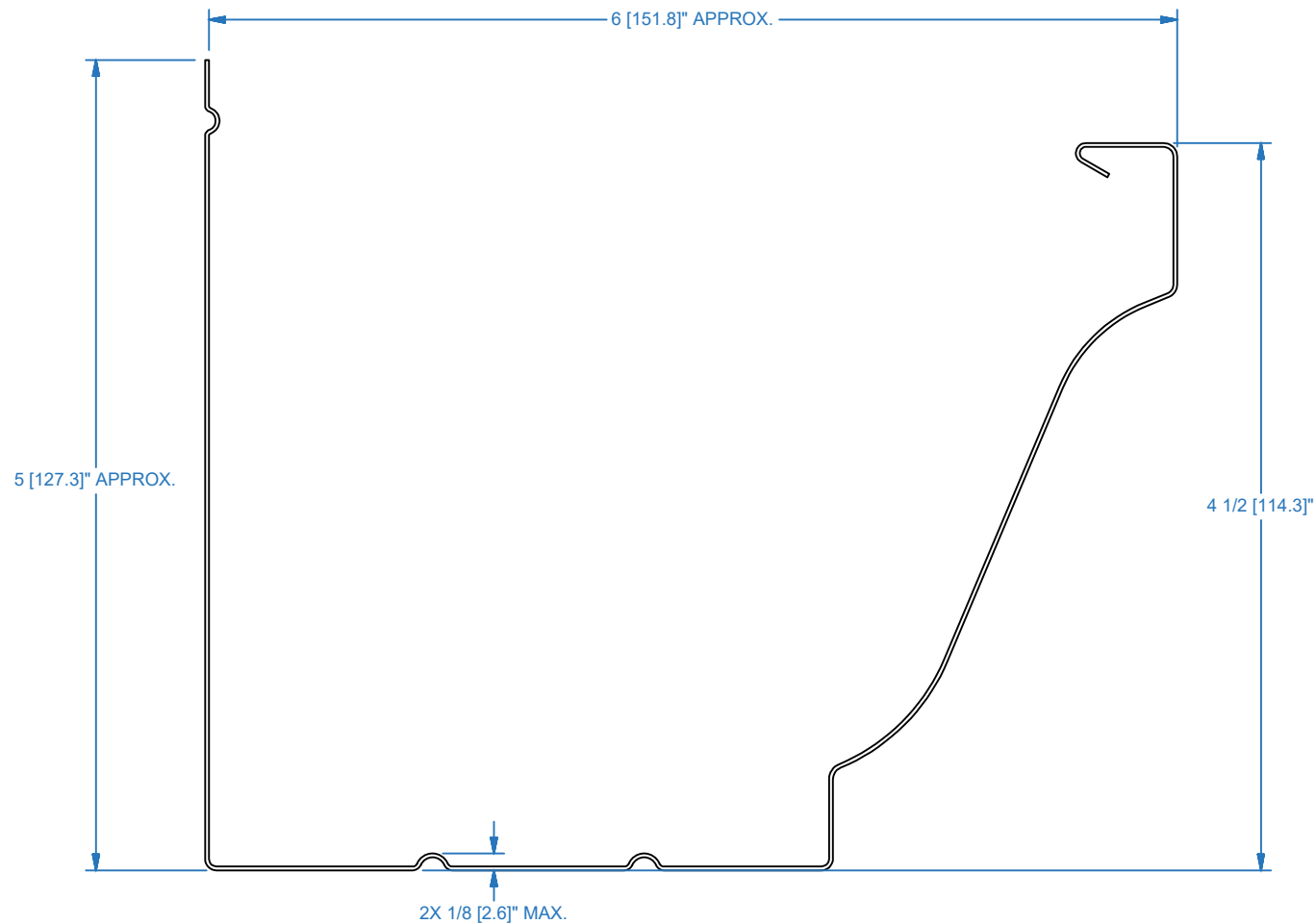
DATE: 11/13/2023

DRAWN BY: RC

Purchaser:

SHT. #1





NOTE:
 1. COIL WIDTH: 15" [380mm]
 2. DUAL DIMENSIONS: Inch [mm]
 3. SEE MG6-SB5 FOR ADDITIONAL DIMENSIONS.

MATERIAL

PAINTED STEEL/PAINTED
ALUMINUM/COPPER

PART NUMBER

MG6-BB6

PART NAME

6" K STYLE GUTTER PROFILE
BOTTOM BEAD

EP FABTECH METALS MFG

1381 DARRINGTON RD. SUITE C
EL PASO, TEXAS

(915)-775-3539
79928

Job Name:

Job Location:

SCALE: N.T.S.

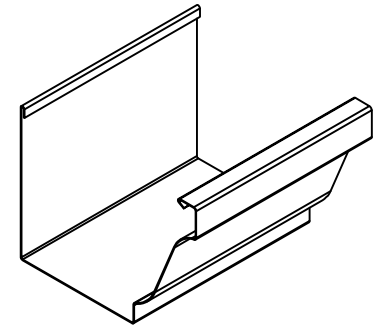
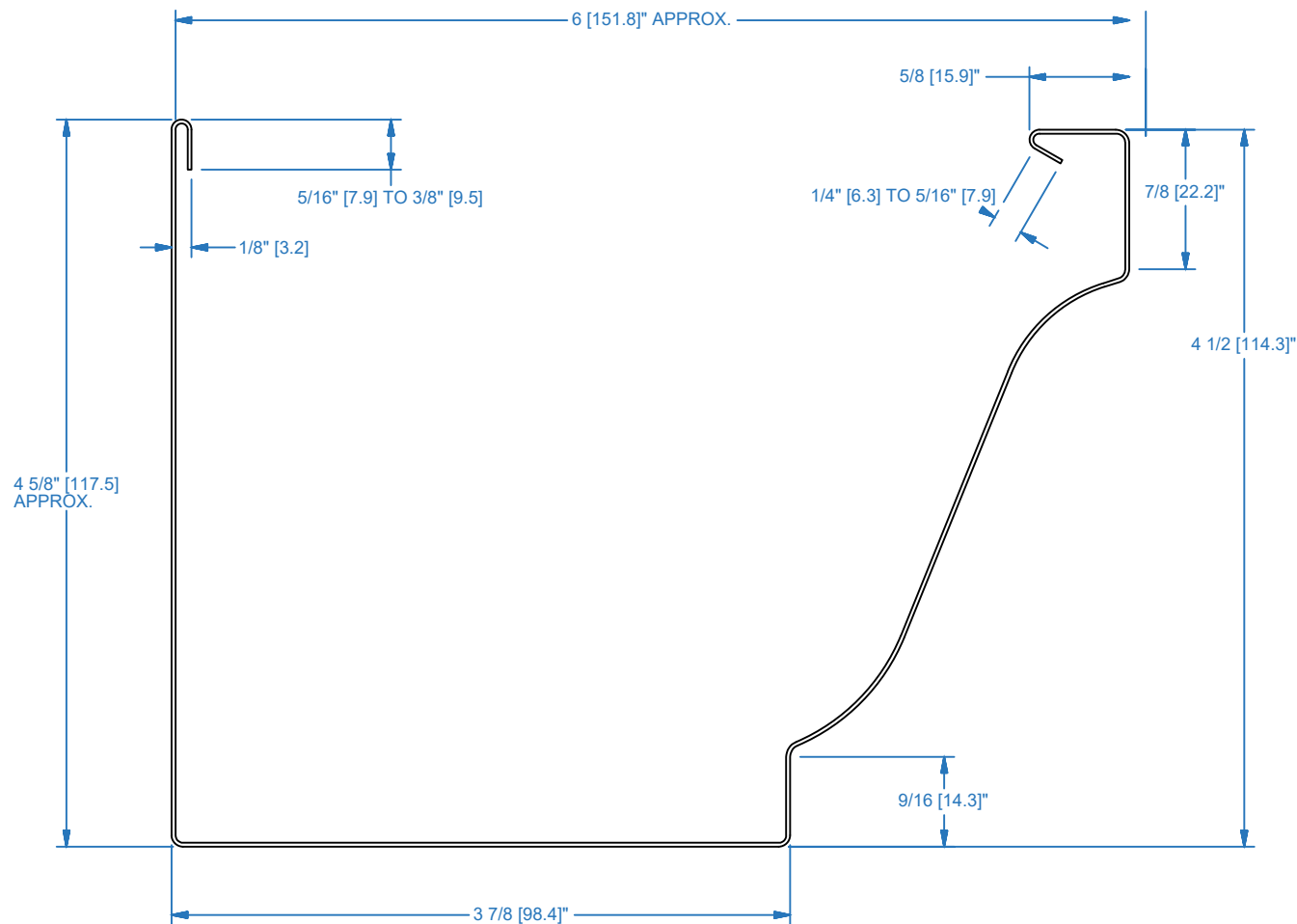
DATE: 11/13/2023

DRAWN BY: RC

Purchaser:

SHT. #1





NOTE:
1. COIL WIDTH: 15" [380mm]
2. DUAL DIMENSIONS: Inch [mm]

MATERIAL
PAINTED STEEL/PAINTED
ALUMINUM/COPPER

PART NUMBER
MG6-HK6

PART NAME
6"K STYLE GUTTER PROFILE
W/HOOK

EP FABTECH METALS MFG

1381 DARRINGTON RD. SUITE C
EL PASO, TEXAS

(915)-775-3539
79928

Job Name:

Job Location:

SCALE: N.T.S.

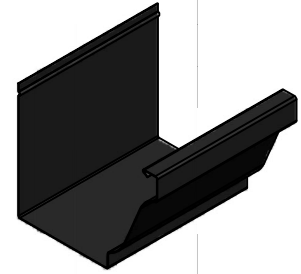
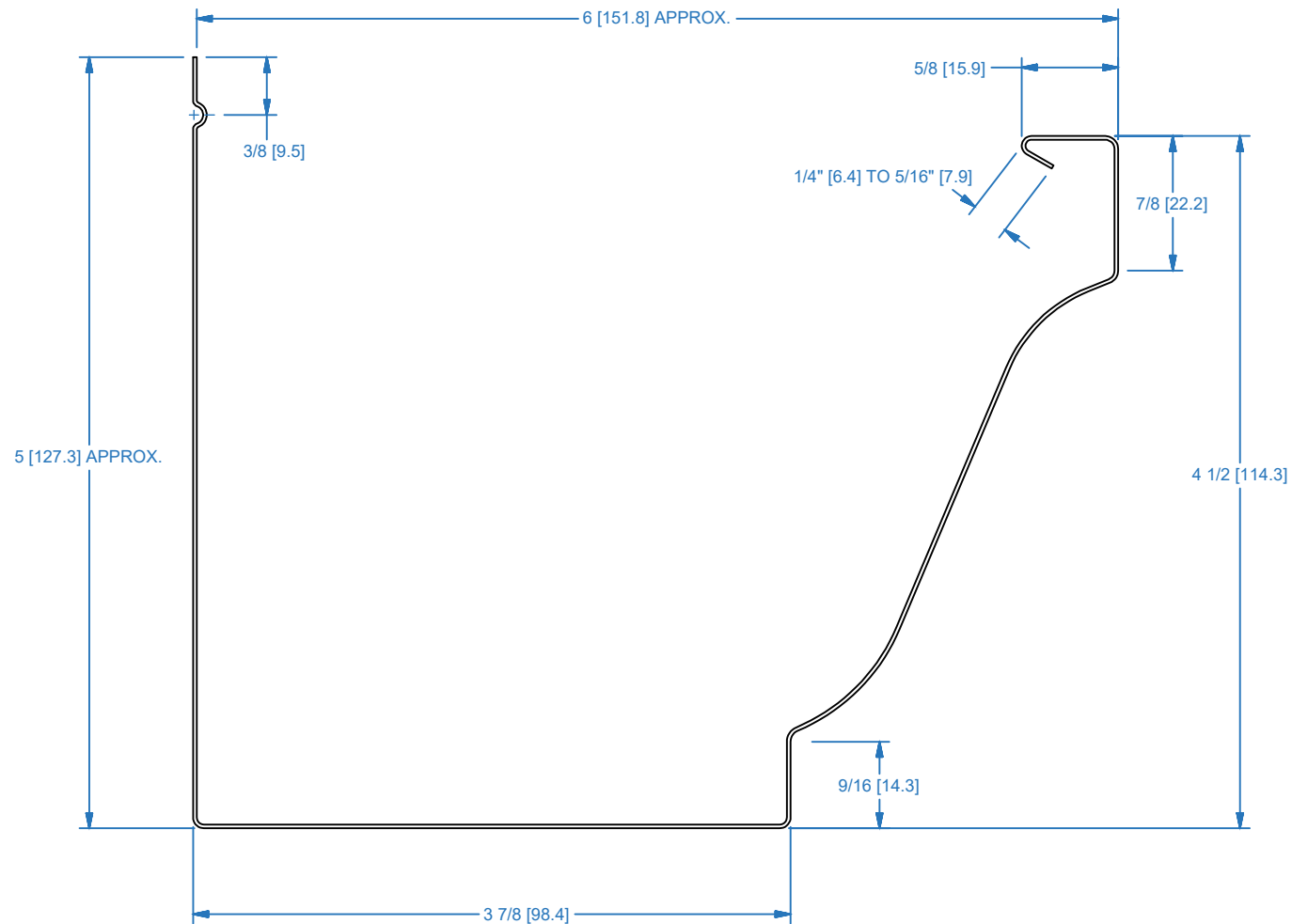
DATE: 11/13/2023

DRAWN BY: RC

Purchaser:

SHT. #1





NOTE:
 1. COIL WIDTH: 15" [380mm]
 2. DUAL DIMENSIONS: Inch [mm]

MATERIAL
 PAINTED STEEL/PAINTED
 ALUMINUM/COPPER

PART NUMBER
 MG6-SB6

PART NAME
 6" K STYLE GUTTER PROFILE
 STRAIGHT BACK

EP FABTECH METALS MFG

1381 DARRINGTON RD. SUITE C
 EL PASO, TEXAS

(915)-775-3539
 79928

Job Name:

Job Location:

SCALE: N.T.S.

DATE: 11/13/2023

DRAWN BY: RC

Purchaser:

SHT. #1

