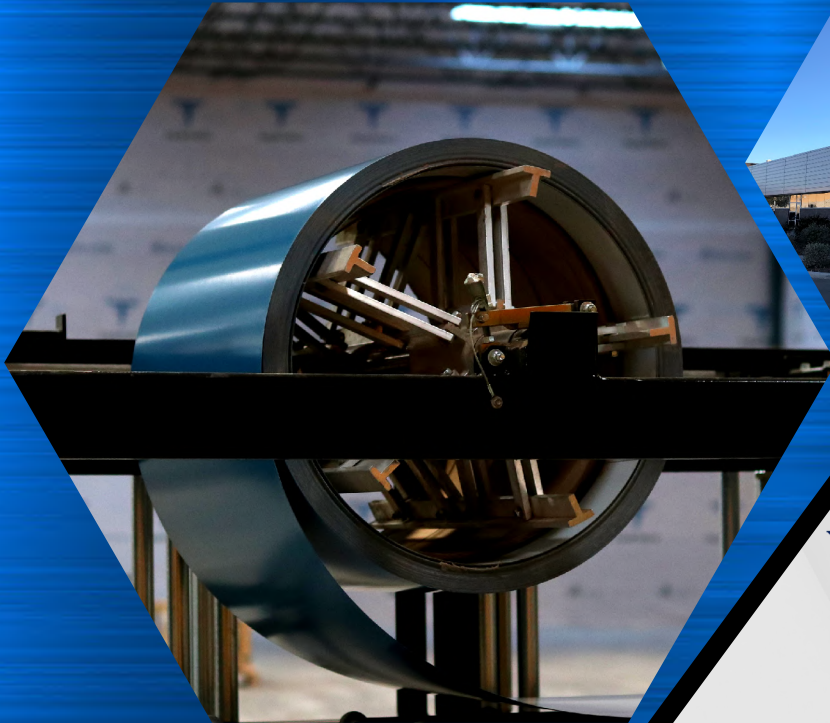


PRODUCT CATALOG

WORLD-CLASS METAL FABRICATION



EP FABTECH



ANSI/ES-1 CERTIFIED

915-775-3539
epfabtechmetals.com

"If you change the way you look at things, the things you look at change."

WAYNE DYER





INDEX

COMPANY INFORMATION

- 3 *A MESSAGE FROM EP FABTECH*
- 4 *EP FABTECH METALS MFG*
- 5 *FINISHES / SPECIFICATIONS*
- 6 *EP FABTECH STANDARD AND PREMIUM MANUFACTURING COLORS*

PANELS

- 10 *U-PANEL*
- 11 *R-PANEL*
- 12 *CORRUGATED PANEL*
- 13 *STANDING SEAM*
- 14 *ALUMINUM COMPOSITE PANEL (ACM)*
- 15 *SOFFIT*

SHEET METAL

- 16 *TRIMS & ACCESORIES*

CNC DESIGN

- 27 *GALLERY*



VISION

CLIENT SATISFACTION AND MORE

Accomplished in metal fabrication with satisfied clients and national aspirations.



PRODUCT

OVER 40 + PRODUCTS TO SELECT FROM

We've developed beautiful paneling, roofs, gutters, and other products for countless clients with a proven track record of excellence



EQUIPMENT

WORLD CLASS FABRICATION

Our operators use state-of-the-art, calibrated equipment to make sure your design is executed perfectly.



PROFESSIONALS

SKILLED AND CERTIFIED EXPERTS

If you're looking for an expert metal fabrication team, look no further than EP Fabtech



Eddy Acosta
Estimator



Angel Hernandez
Lead Technician



Ashley Maldonado
Administrator

A MESSAGE FROM THE EP FABTECH FAMILY

From a small town of a few hundred to a major, bustling city, El Paso has seen incredible change throughout its history. That incredible metamorphosis didn't happen by accident—El Pasoans worked hard to create a great city for all its inhabitants. That can-do attitude produced our fabrication staff, who use their diligence and expertise daily. Our engineers, technicians, and design team are constantly looking for new methods, technology, and materials to advance the field of metal panel fabrication. We have a passionate, professional staff and we're always looking to grow our family!

EP FABTECH METALS MFG

With the world constantly growing and expanding, the need for quality construction and construction materials will continue to rise. Noticing the need for these services, EP Fabtech was founded to fill the deficiencies in the metal fabrication. First, we wanted to provide a consistent product for all of our customers, so they wouldn't suffer from poor-quality products. Next, we wanted to reduce lead and production times, down from the weeks and even months of other fabrication companies. Last, but most importantly, we wanted to develop a client-centric focus for our clients. Today, EP Fabtech is an accomplished metal fabrication company with satisfied clients and international aspirations.

EP Fabtech offers over 40 products, ranging from standing seam panels, aluminum composite panels to sheet metal trim such as ridge caps, downspouts, gutters and more. These products are offered in Kynar standard or custom finish, as well as galvanized and galvalume selections. Aluminum products are available in 24 gauge, while ACM can range from 4 mm to 6mm. EP Fabtech is also a certified distributor for Firestone with a vision to expand..

In order to assist with on-site manufacturing and quality control, EP Fabtech can mobilize world-class equipment to sites providing a time efficient and cost effective solution for clients. Saving that money on shipping and fuel expenses, allows funds to be allocated in several ways in an effort to help finish the project or simply put money back in your pocket for the next one!

Architectural details, specifications and shop drawings available upon request. Contact EP Fabtech Metals MFG by visiting the website Fabtech.slashclick.com or for any sales related questions email metalsales@fabtechmetal.com.



In-house Manufacturing Equipment

EP Fabtech utilizes top of the line equipment to provide clients with high quality products at low cost. Coil of desired finish can be fabricated into numerous sheet metal profiles ranging from corrugated panels, using in house roll formers, to continuous length gutters and other



specialized pieces such as drip edges, ridge caps, windclips and many more. EP Fabtech also houses state of the art CNC equipment to create custom Aluminum Composite Panels, as well as several other designs made out of ACM material. Signs, tables, and cut outs are just some of the innovative products EP Fabtech can fabricate.



Portable Equipment

From roll forming machines to snap-lock equipment, EP Fabtech can manufacture a number of profiles on the job site to save you time, money and customize the material to your project's needs. Standing seam panels, corrugated panels and soffit are just a few examples of the products EP Fabtech can manufacture on location. More information can be requested via the website Fabtech.slashclick.com

EP FABTECH FINISHES AND SPECIFICATIONS

EP Fabtech sheet metal is pre finished with a premium fluoropolymer coating produced with Kynar 500® or Hylar 500® resin. Due to its outstanding resistance to weather and ultraviolet radiation, you can be assured your product holds maximum exterior durability. Coating may be fully warranted for 20 years against cracking, peeling and fading. For more information on regarding warranty on select products, contact EP Fabtech via Fabtech.slashclick.com.

Galvalume Coating

Coated Galvalume® Steel Architectural Sheet & Coil is extra smooth, tension leveled, hot-dipped 55% Al-Zn coated steel that is primed and coated on one side with UNA-CLAD full strength Hylar 5000/Kynar 500 (contains a minimum of 70% Hylar/Kynar polyvinylidene fluoride (PVDF) resins) premium fluoropolymer coating system of 1.0 (±0.1) mil total dry film thickness. For additional protection a wash coat of 0.3 – 0.4 mil dry film thickness is applied to the reverse side. An optional strippable protection film is applied for protection during fabrication and installation. Coated Galvalume Steel Architectural Sheet & Coil is for general sheet metal use in building applications and can be utilized for fascia panels, soffits, gravel stops, copings, and roofing such as flat seam, standing seam, batten seam, and mansards.

Galvanized Coating

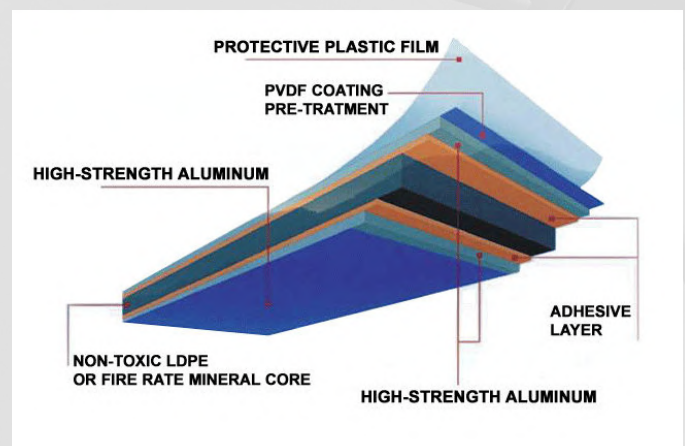
Coated Galvanized Steel Architectural Sheet & Coil is AISI-G90 extra smooth, minimum spangle, tension leveled, hot-dipped galvanized steel that is primed and coated on one side with UNA-CLAD full strength Hylar 5000™/Kynar 500® (contains a minimum of 70% Hylar/Kynar polyvinylidene fluoride (PVDF) resins) premium fluoropolymer coating system of 1.0 (±0.1) mil total dry film thickness. This coating is AAMA 621-02 compliant. For additional protection a wash coat of 0.3 – 0.4 mil dry film thickness is applied to the reverse side. An optional strippable protection film is applied for protection during fabrication and installation. Coated Galvanized Steel Architectural Sheet & Coil is for general sheet metal use in building applications and can be utilized for fascia panels, soffits, gravel stops, copings, and roofing such as flat seam, standing seam, batten seam, and mansards.



Coil supplied by several manufactures for more information contact EP Fabtech Metals MFG

ACM Specifications

Aluminum Composite Material (ACM) panels consist of two sheets of coil coated 3000 series or 5000 series alloy aluminum bonded to either a polyethylene (PE) or mineral filled fire resistant (FR) core. Products are fully tested and certified per building code requirements for North America. All manufacturing processes and raw materials are audited quarterly by a 3rd party verification laboratory of record. Warranty up to 30 years may be available. Consult with EP Fabtech for more information.



ACM supplied by several manufactures for more information contact EP Fabtech Metals MFG

Notes:

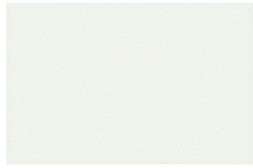
1. Special colors and finishes available. Consult EP Fabtech Metals MFG for pricing, lead time and specifications.
2. Galvalume® is a registered trademark of BIEC international Inc.
3. Kynar 500® is a registered trademark of Arkema, Inc.
4. Hylar 500® is a registered trademark of Solvay Solexis

METAL COLOR CHART

Standard Colors



Stone White



Bone White



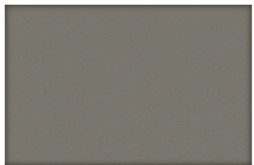
Almond



Sandstone



Sierra Tan



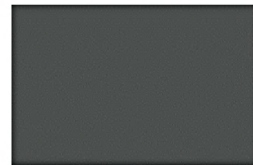
Slate Gray



Aged Zinc*



Cityscape



Charcoal Gray



Matte Black



Mansard Brown



Burnished Slate*®



Medium Bronze



Dark Bronze



Extra Dark Bronze



Brandywine



Regal Red



Colonial Red



Terra Cotta



Hartford Green



Award Blue*®



Regal Blue



Sky Blue



Electric Blue*®



Teal



Sherwood Green



Dark Ivy



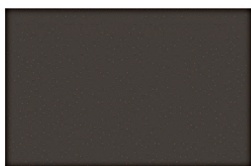
Patina Green



Helmlock Green



Tropical Patina



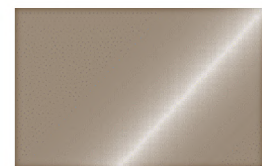
Vintage*®



Silver Metallic*®



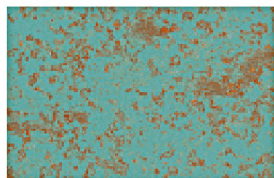
Classic Copper*®



Champagne Metallic*®

METAL COLOR CHART

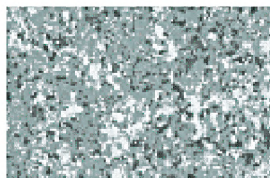
Premium Colors



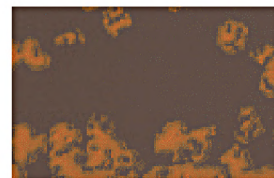
Antique Copper



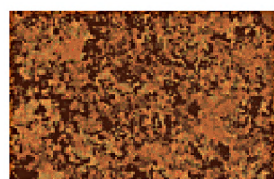
Natural Antique Copper



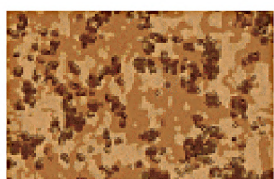
Weathered Zinc



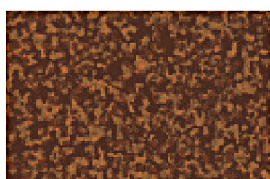
Natural Rust



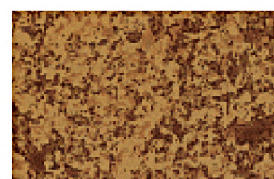
Burnt Rust



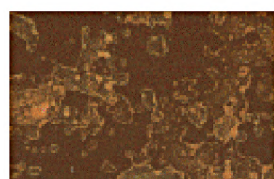
Ponderosa Rust



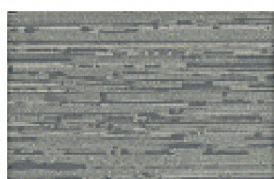
Sedona Rust



Tamarack Rust



Rustic Copper



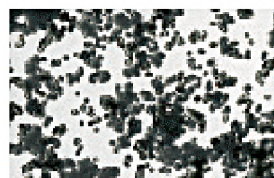
Timeless Silver



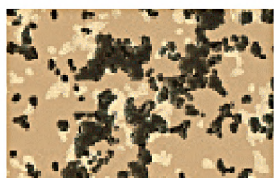
Timeless Bronze



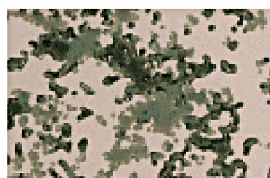
Timeless Copper



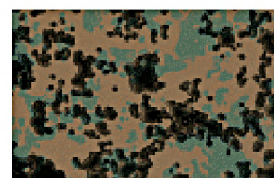
Arctic CAMO



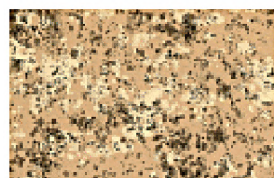
Desert CAMO



Marshland CAMO



Woodland CAMO



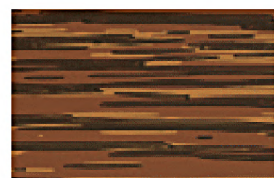
Sand Dune



Driftwood



Pine



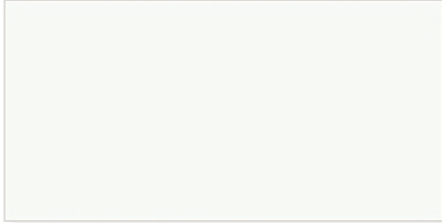
Red Cedar

Custom and other colors available.
Consult EP Fabtech for more information.

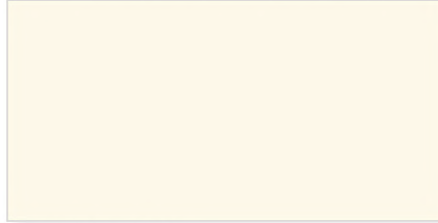
ACM COLOR CHART

Solid Color Series

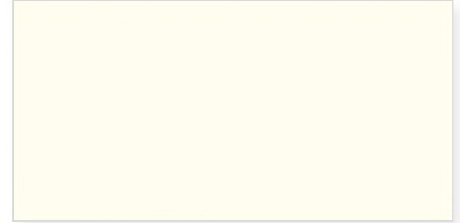
These *Duramar*® 2-coat colors consist of a 0.2 mil primer and a 0.8 mil color coat, for a nominal dry film thickness of 1.0 mil.



Regal White S-31



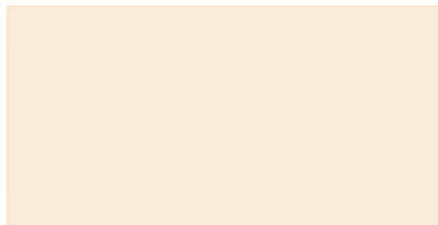
Off White S-91



Bone White S-30



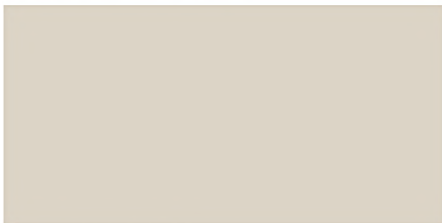
RVW White S-327



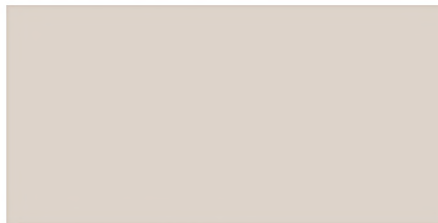
Oyster White S-70



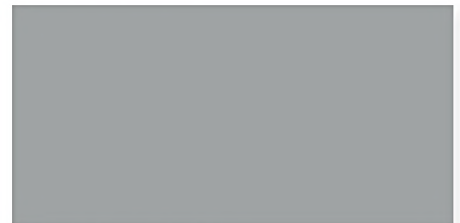
Marble S-112



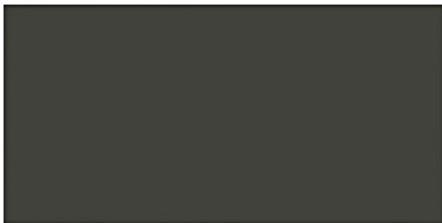
Sandstone S-84



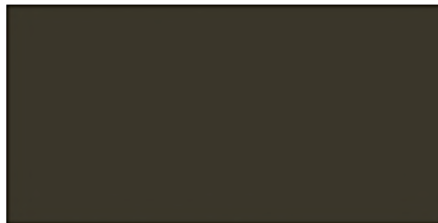
Limestone S-58



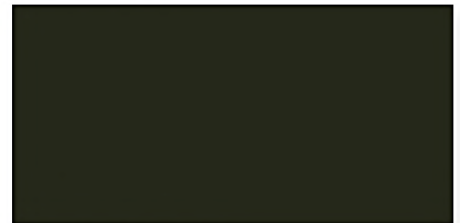
Cadet Grey S-32



Charcoal S-381



Classic Bronze S-33



Classic Black S-34



Marakesh Red S-48



Deep Sea Blue S-74

Notes:

1. Duramar® is a trademark of PPG INDUSTRIES OHIO INC
2. Custom and other colors available. Consult with Ep Fabtech Metals for pricing, lead time and specifications.

ACM COLOR CHART

Mica Color Series

These *Duranar*® 2-coat mica colors consist of a 0.2 mil primer and a 0.8 mil color coat, for a nominal dry film thickness of 1.0 mil. Mica flakes are suspended in the color coat – giving the appearance of a metallic finish.



Anodic Clear M-35



Platinum M-36



Silversmith M-115



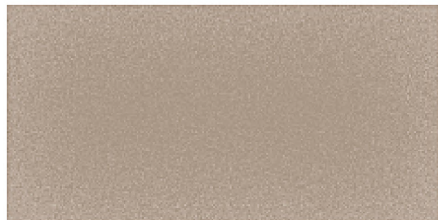
Champagne Mica M-38



Champagne Pearl M-60



Champagne Bronze M-94



Aged Bronze M-367



Pewter Mica M-366



Medium Grey M-301

Metallic Color XL Series

These *Duranar*® 3-coat metallic colors consist of a 0.2 mil primer, a 0.8 mil color coat, and a 0.5 mil clear coat, for a nominal dry film thickness of 1.5 mils.



Silver Metallic XL-25



Gun Barrel XL-382



Pewter Metallic XL-65



Champagne Metallic XL-26

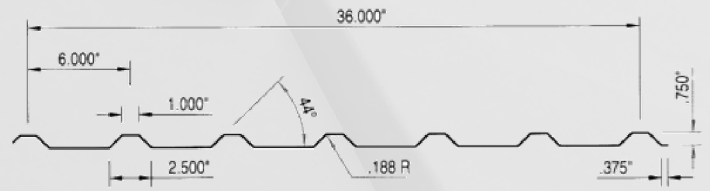
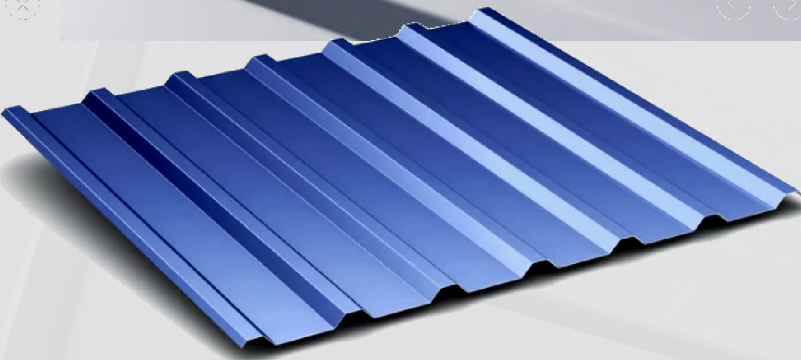
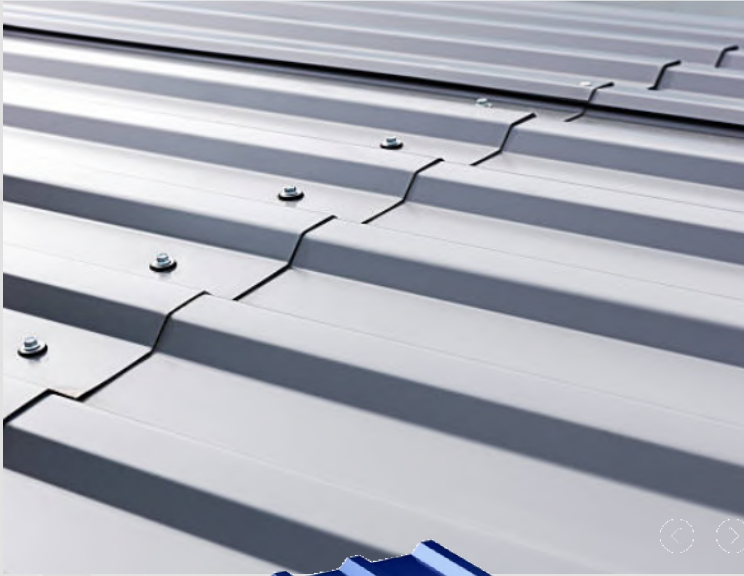


Rustic Copper Metallic XL-27



Bright Copper Metallic XL-28

EP FABTECH U-PANEL



U- Panels are designed for residential or commercial construction. Whether placed on a roof, canopy or used as a privacy barrier, this panel is as durable as it is aesthetically pleasing.

U Panel Benefits

Hail Resistant – Underwriters Laboratories Class-4 Rating
Fire Resistant
Wind Resistance
Energy Efficient
Greater Life Expectancy
Outstanding Durability
Up to a 30-Year Limited Paint Warranty

Application

EP Fabtech U Panels may be installed in a non-sequential pattern over a solid substrate or open framing
Application of a manufacture approved underlayment prior to panel installation over a solid substrate is recommended

Notes:

1. Special colors and finishes available. Consult EP Fabtech Metals MFG for pricing, lead time and specifications.
2. Galvalume® is a registered trademark of BIEC international Inc.
3. Kynar 500® is a registered trademark of Arkema, Inc.

Material

24 Gauge Steel

Specifications

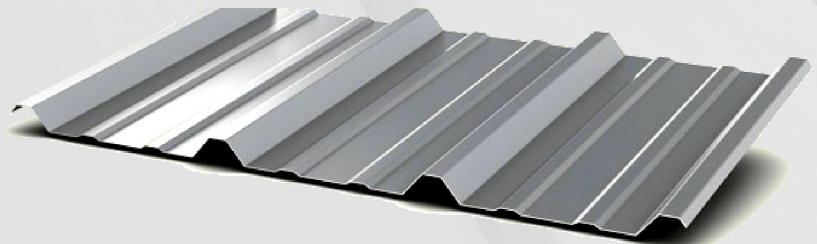
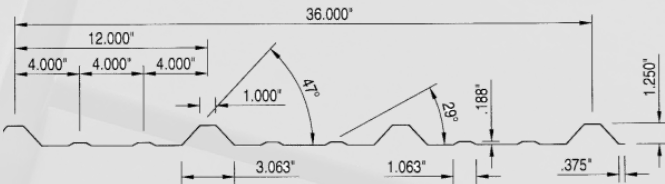
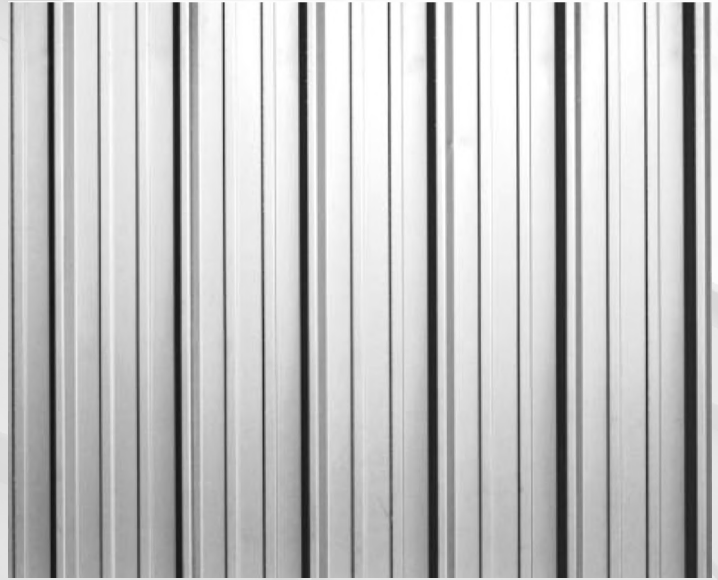
Coverage: 36"

Finishes: Kynar 500® / Galvalume

ASTM Tests

ASTM D 968	ASTM D 2247
ASTM D 4587	ASTM D 1735
ASTM D 3361	ASTM D 2794
ASTM D 3359	ASTM B 117
ASTM D 659	ASTM E84
ASTM D 1308	ASTM G 154
ASTM D 5894	
ASTM D 522	
ASTM D 523	
ASTM D 3363	

EP FABTECH R-PANEL



R- Panels are designed for residential or commercial construction. Whether covering a roof, wall or used as a privacy barrier, this panel is as durable as it is aesthetically pleasing.

Material

24 Gauge Steel

Specifications

Coverage: 36"

Finishes: Kynar 500® / Galvalume

ASTM Tests

ASTM D 968	ASTM D 2247
ASTM D 4587	ASTM D 1735
ASTM D 3361	ASTM D 2794
ASTM D 3359	ASTM B 117
ASTM D 659	ASTM E84
ASTM D 1308	ASTM G 154
ASTM D 5894	
ASTM D 522	
ASTM D 523	
ASTM D 3363	

R Panel Benefits

Hail Resistant – Underwriters Laboratories Class-4 Rating
Fire Resistant
Wind Resistance
Energy Efficient
Greater Life Expectancy
Outstanding Durability
Up to a 30-Year Limited Paint Warranty

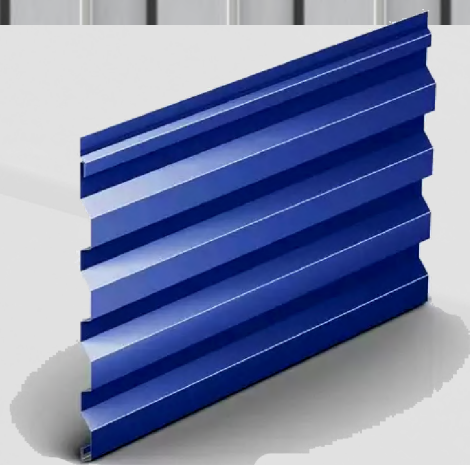
Application

EP Fabtech R Panels may be installed in a non-sequential pattern over a solid substrate or open framing
Application of a manufacture approved underlayment prior to panel installation over a solid substrate is recommended

Notes:

1. Special colors and finishes available. Consult EP Fabtech Metals MFG for pricing, lead time and specifications.
2. Galvalume® is a registered trademark of BIEC International Inc.
3. Kynar 500® is a registered trademark of Arkema, Inc.

EP FABTECH CORRUGATED PANEL



Wav Panels are designed for residential or commercial construction. Whether placed on a roof, canopy or used as a privacy barrier, this panel is as durable as it is aesthetically pleasing.

WAV Panel Benefits

- Up to a 30-year limited paint warranty
- Hail resistant – Underwriters Laboratories Class-4 Rating
- Fire resistant
- Wind resistance
- Practically maintenance free
- Greater life expectancy
- Outstanding durability

Application

EP Fabtech Wav Panels may be installed in a non-sequential pattern over a solid substrate or open framing either vertically or horizontally. Application of a manufacture approved underlayment prior to panel installation over a solid substrate is recommended

Notes:

1. Special colors and finishes available. Consult EP Fabtech Metals MFG for pricing, lead time and specifications.
2. Kynar 500® is a registered trademark of Arkema, Inc.

Material

24 Gauge Steel

Specifications

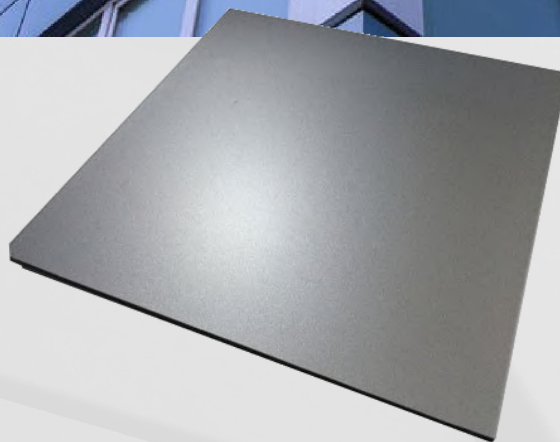
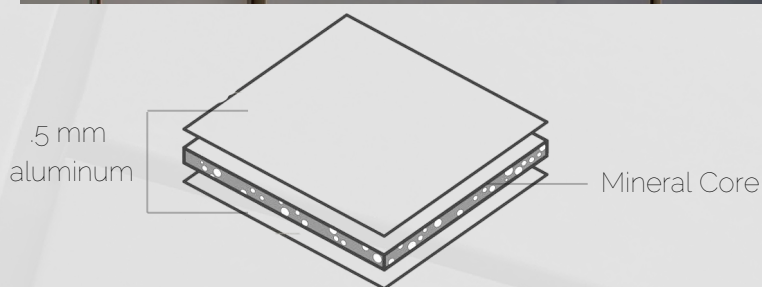
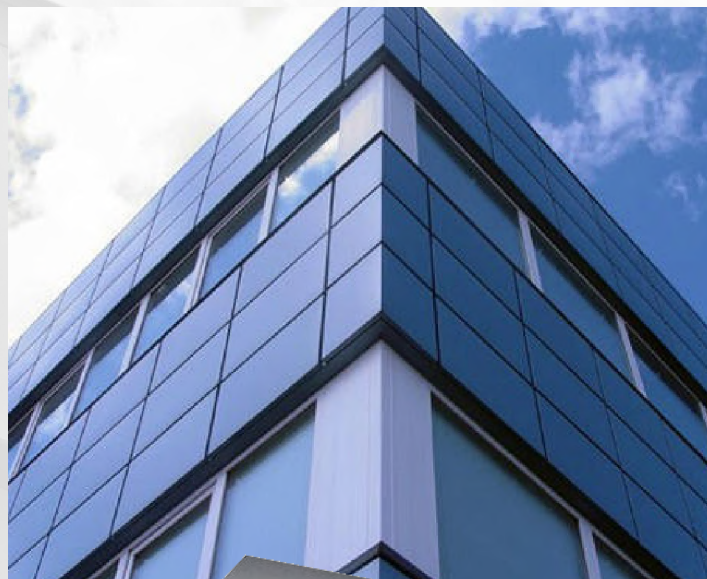
Coverage: 16"

Finishes: Kynar 500®

ASTM Tests

ASTM D 968	ASTM D 2247
ASTM D 4587	ASTM D 1735
ASTM D 3361	ASTM D 2794
ASTM D 3359	ASTM B 117
ASTM D 659	ASTM E84
ASTM D 1308	ASTM G 154
ASTM D 5894	
ASTM D 522	
ASTM D 523	
ASTM D 3363	

EP FABTECH ACM PANEL



ACM panels are designed for residential or commercial construction. While providing moisture protection and energy efficiency, they also provide a modern, sleek look.

Material

Aluminum facings in 0.020" nominal thickness
(Polyethylene core available in 3/4/6 mm thicknesses
(PE) Proprietary fire-resistant core available in 4mm
thickness only

Specifications

Custom sizes per job requirements
Aluminum finish in standard and custom colors
(refer to color chart for color selection or contact EP
Fabtech for additional color selection)

ASTM Tests

ASTM C-365	ASTM C-393	ASTM C-297
ASTM D-790	ASTM D-638	ASTM D-1781
ASTM D-732	ASTM C-518	ASTM E-90
ASTM D-648	ASTM C-273	ASTM C-272
ASTM D-696	ASTM D-635	ASTM D-1929
ASTM E-84		

ACM Panel Benefits

Withstands environmental temperature changes from -55°
F to +180 ° F

High thermal comfort thus additional savings on gas and
energy

Coefficient of linear expansion is governed by the aluminum
sheet

Economical with long lasting durability

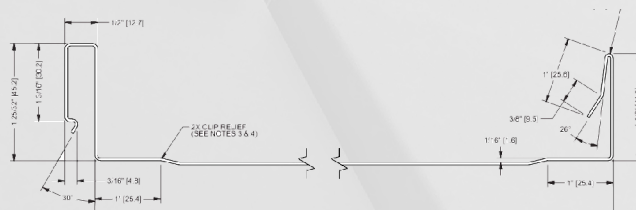
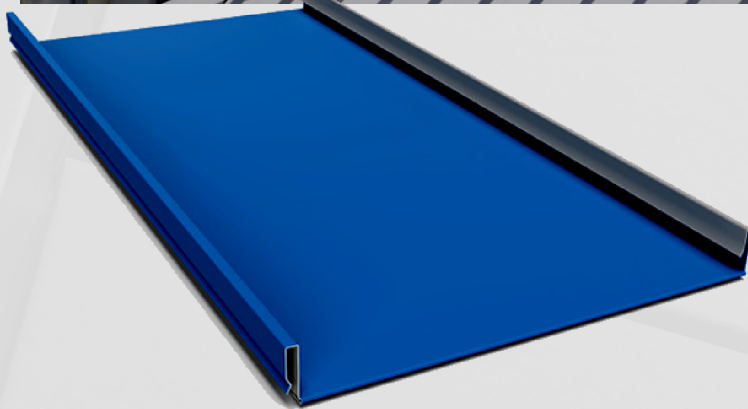
Application

EP Fabtech ACM panels may be installed in a non-sequential
pattern over a solid substrate/ Application of a manufacture
approved underlayment prior to panel installation over a solid
substrate is recommended for moisture protection.

Notes:

1. Special colors and finishes available. Consult EP Fabtech Metals MFG for pricing, lead time and specifications.
2. Galvalume® is a registered trademark of BIEC International Inc.
3. Kynar 500® is a registered trademark of Arkema, Inc.
4. Contact us for other ACM work such as signs.

EP FABTECH STANDING SEAM PANEL



Standing seam panels are designed for residential or commercial construction. This roof panel is as durable as it is aesthetically pleasing. You can select from a flat, smooth finish to a ribbed, modern look.

Material

24 Gauge Steel

Specifications

Coverage: 12" - 24"

Finishes: Kynar 500®

ASTM Tests

ASTM D 968	ASTM D 2247
ASTM D 4587	ASTM D 1735
ASTM D 3361	ASTM D 2794
ASTM D 3359	ASTM B 117
ASTM D 659	ASTM E84
ASTM D 1308	ASTM G 154
ASTM D 5894	
ASTM D 522	
ASTM D 523	
ASTM D 3363	

Standing Seam Benefits

Hail Resistant – Underwriters Laboratories Class-4 Rating

Fire Resistant

Wind Resistance

Energy Efficient

Greater Life Expectancy

Outstanding Durability

Up to a 30-Year Limited Paint Warranty

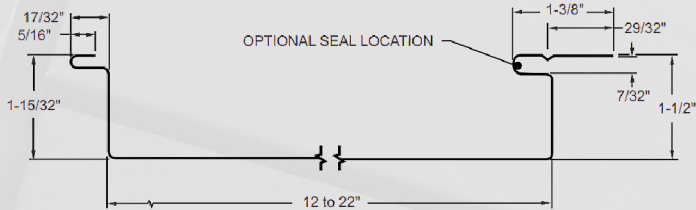
Application

EP Fabtech standing seam panels may be installed in a non-sequential pattern over a solid substrate or open framing. Application of a manufacture approved underlayment prior to panel installation over a solid substrate is recommended.

Notes:

1. Special colors and finishes available. Consult EP Fabtech Metals MFG for pricing, lead time and specifications.
2. Galvalume® is a registered trademark of BIEC International Inc.
3. Kynar 500® is a registered trademark of Arkema, Inc.
4. Contact us for different profiles available.

EP FABTECH SOFFIT



Soffit is able to protect rafters from the elements. Keeping moisture away from the rafters reduces the chance of mold, and helps preserve the life of the materials.

Material

24 Gauge Steel

Specifications

Coverage: 12" to 22"

Finishes: Kynar 500®

ASTM Tests

ASTM C-365	ASTM C-365
ASTM C-393	ASTM D-648
ASTM C-297	ASTM C-273
ASTM D-790	ASTM C-272
ASTM D-638	ASTM D-696
ASTM D-1781	ASTM D-635
ASTM D-732	ASTM D-1929
ASTM C-518	ASTM E-84
ASTM E-90	

Soffit Panel Benefits

Decreased Maintenance

Soffit Venting Optional

Protection of Rafters

Smooth, clean appearance

Concealed fasteners

Corrosion resistant coatings available

Application

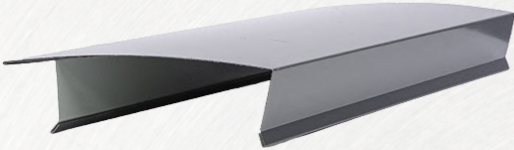
EP Soffit Fabtech panels may be installed under rafters or along walls. Any moisture Barriers and jamb flashings must first be installed. Soffit panels are installed from left to right or right to left.

Notes:

1. Special colors and finishes available. Consult EP Fabtech Metals MFG for pricing, lead time and specifications.
2. Galvalume® is a registered trademark of BIEC International Inc.
3. Kynar 500® is a registered trademark of Arkema, Inc.
4. Contact us for different profiles available

TRIMS & ACCESSORIES

2 PIECE ADJUSTABLE COPING CAP



The Coping Cap is designed to aid the top-most horizontal surface of the wall from water penetration.

LENGTH

10'

DIMENSIONS

Custom

FINISH

Kynar 500 ®

AC CLIP FLASHING

The AC Clip Flashing prevents moisture penetration around AC and Skylight units.

LENGTH

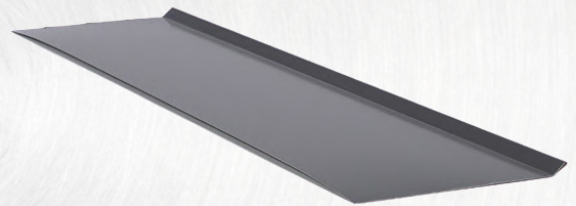
10'

DIMENSIONS

Custom

FINISH

Kynar 500 ® / Galvanized



AC ROOF JACK



The AC Roof Jack provides an escape route for natural gas and air flow in an aesthetic manner.

LENGTH

Custom

DIMENSIONS

Custom

FINISH

Kynar 500 ® / Galvanized

TRIMS & ACCESSORIES

BOX GUTTER

The Box Gutter guides rain and storm water off the roof and away from the foundation of your building.

LENGTH

10' / Continuous up to 100'

DIMENSIONS

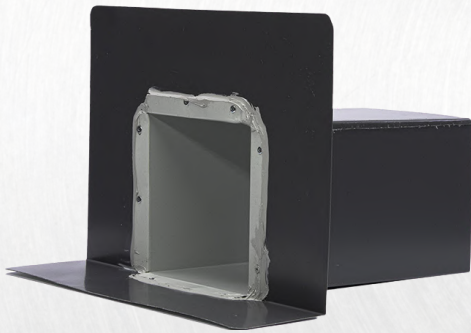
Custom

FINISH

Kynar 500 ®



COATED SCUPPER



Scuppers are used to provide an outlet through parapet walls or gravel stops on flat and built-up roofs to allow drainage of excess water.

LENGTH

Custom

DIMENSIONS

Custom

FINISH

Kynar 500 ® / Galvanized

Pitch Pans protect roofs by forming waterproof barriers where moisture could otherwise penetrate and cause costly damage.

LENGTH

Custom

DIMENSIONS

Custom

FINISH

Kynar 500 ® / Galvanized



COATED PITCH PAN

TRIMS & ACCESSORIES

COPING ES-1 CLIP



The Coping Wind Clip has been designed to provide additional wind uplift resistance for the coping cap attached.

LENGTH

Custom

DIMENSIONS

Custom

FINISH

Galvanized

Downspouts guide rain and stormwater out and away from the foundation of your building.

LENGTH

10' / 20'

DIMENSIONS

Custom

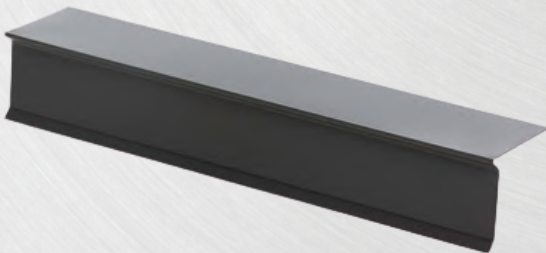
FINISH

Kynar 500 ®

DOWNSPOUT



DRIP EDGE



Drip Edge help control the flow of water away from the fascia and to protect the underlying roofing components

LENGTH

10' / 20'

DIMENSIONS

Custom

FINISH

Kynar 500 ®

TRIMS & ACCESSORIES

FLAT SURFACE MOUNT REGLET

The Flat Surface Mount Reglet is paired with counter-flashing along roof joint to prevent water infiltration.

LENGTH

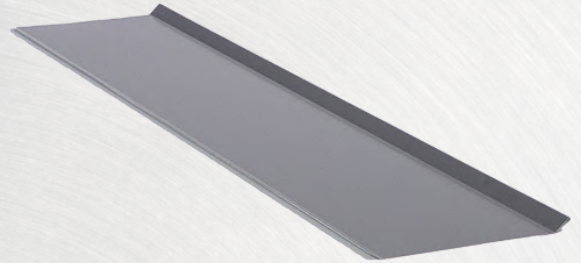
10' / 20'

DIMENSIONS

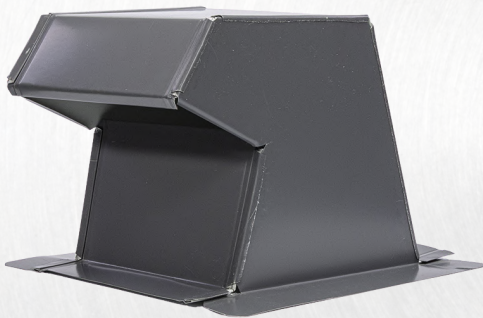
Custom

FINISH

Kynar 500 ® / Galvanized



GOOSENECK VENT



Gooseneck Vents allow air flow to dissipate from the building to prevent overheating or trapped moisture.

LENGTH

Custom

DIMENSIONS

Custom

FINISH

Kynar 500 ® / Galvanized

GRAVEL GUARD

Gravel Guards prevent water and gravel from washing away at the top edge of a building.

LENGTH

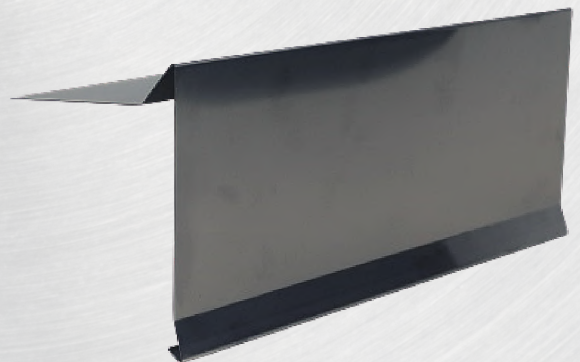
10' / 20'

DIMENSIONS

Custom

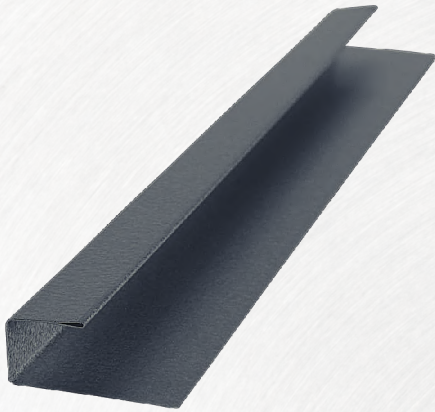
FINISH

Kynar 500 ® / Galvanized



TRIMS & ACCESSORIES

J TRIM



J Trim creates the perfect edging and siding along doors, windows, soffit and more while holding material in place.

LENGTH

10' / 20'

DIMENSIONS

Custom

FINISH

Kynar 500 ® / Galvanized

L ROOF TO WALL

L Roof To Wall trims give the appearance of a seamless transition to joint roof. Pair it with flashing for water tightness.

LENGTH

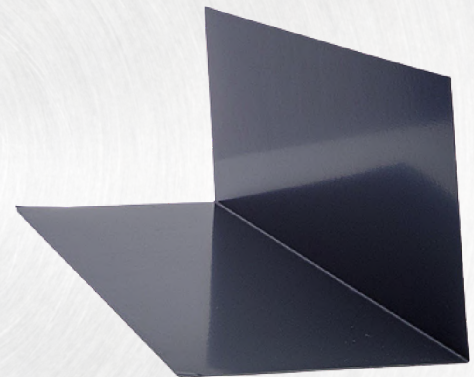
10' / 20'

DIMENSIONS

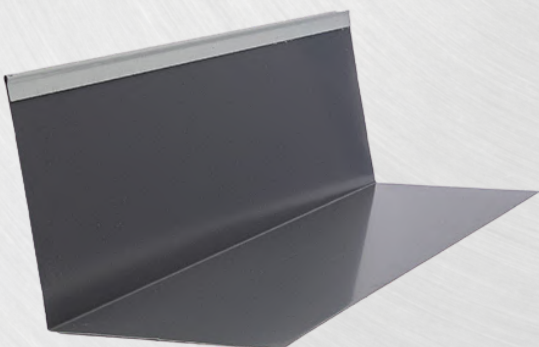
Custom

FINISH

Kynar 500 ® / Galvanized



L STEP FLASHING SCORPION



L step flashing prevents moisture infiltration where the roof meets the wall.

LENGTH

10' / 20'

DIMENSIONS

Custom

FINISH

Kynar 500 ® / Galvanized

TRIMS & ACCESSORIES

L TRIM TO WALL CLOSURE

L trim protects your home from moisture infiltration on the structure where the wall meets the roof and provides a seamless transition to surface.

LENGTH

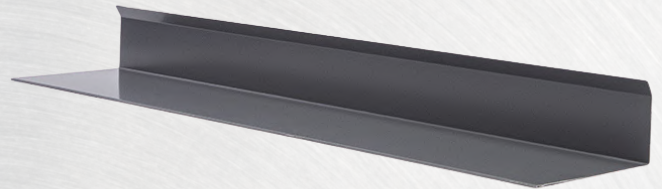
10' / 20'

DIMENSIONS

Custom

FINISH

Kynar 500 ® / Galvanized



LEADERHEAD



Leaderheads help funnel water from the rooftop to the underground drainage system , as well as , stop vacuum lock and prevent gurgling or excess noise

LENGTH

Custom

DIMENSIONS

Custom

FINISH

Kynar 500 ®

OFFSET SURFACE MOUNT REGLET

Offset surface mount reglet helps prevent water penetration at the termination of your wall and provides a clean, seamless transition to counterflashing.

LENGTH

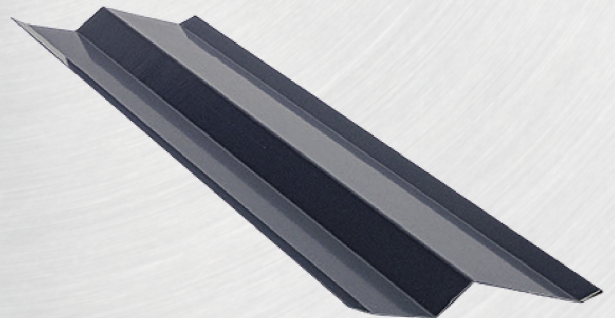
10' / 20'

DIMENSIONS

Custom

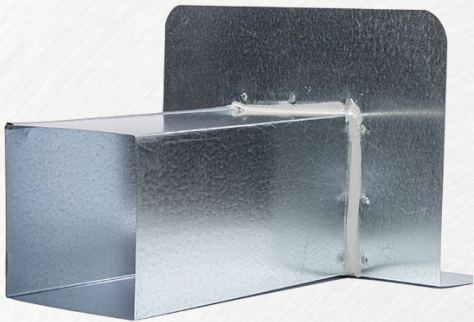
FINISH

Kynar 500 ® / Galvanized



TRIMS & ACCESSORIES

SCUPPER GALVANIZED



Scuppers provide an outlet through parapet walls or gravel stops on flat and built-up roofs to allow drainage of excess water.

LENGTH

Custom

DIMENSIONS

Custom

FINISH

Kynar 500 ® / Galvanized

STANDING SEAM RIDGE CAP

Ridge caps join the two adjoining metal roof panels on either side of the roof joint and conceal continuous ridge vent systems.

LENGTH

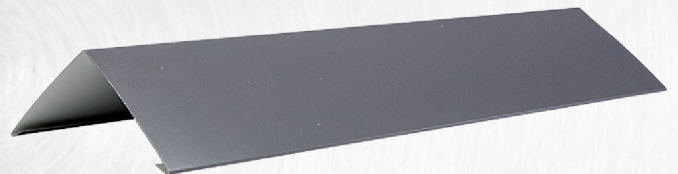
10' / 20'

DIMENSIONS

Custom

FINISH

Kynar 500 ® / Galvanized



STANDING SEAM DRIP EDGE



Standing seam drip edge prevents water from penetrating the fascia below and helps roof panels attached against wind uplift.

LENGTH

10' / 20'

DIMENSIONS

Custom

FINISH

Kynar 500 ®

TRIMS & ACCESSORIES

STARTER CLIP FOR PANELS

Starter clips provide a seamless foundation for horizontally laid corrugated wavy panels. See page 12 for profile and dimensions.

LENGTH

10' / 20'

DIMENSIONS

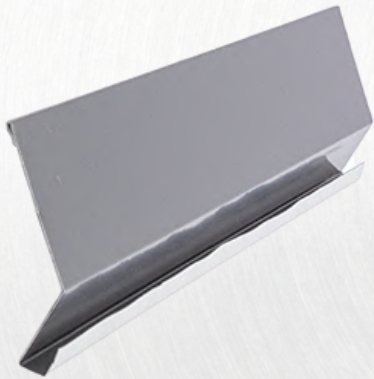
Custom

FINISH

Kynar 500 ®



STUCCO/EIFS FRY REGLET



Fry reglets help prevent water penetration at the termination of your wall and provides a clean, seamless transition to any counterflashing.

LENGTH

10' / 20'

DIMENSIONS

Custom

FINISH

Kynar 500 ® / Galvanized

W-METAL VALLEY

W Metal Valley designed to protect the vulnerable areas on your roof. Typically, installed over weather barrier and passageway to keep your roof dry and protected.

LENGTH

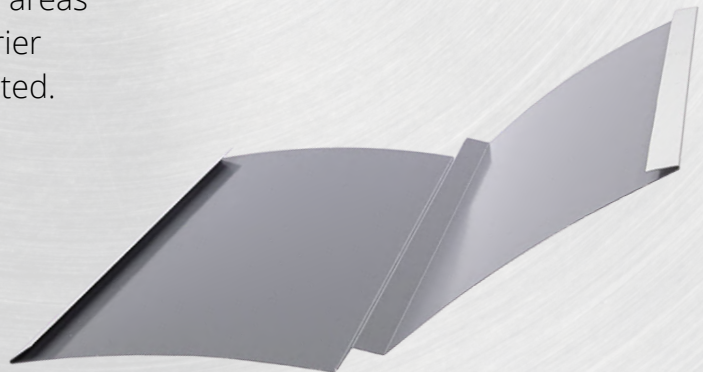
10' / 20'

DIMENSIONS

Custom

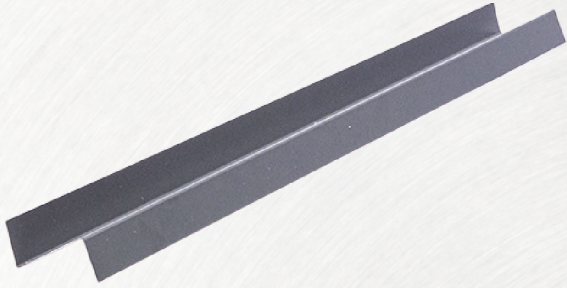
FINISH

Kynar 500 ® / Galvanized



TRIMS & ACCESSORIES

Z-TRIM



Z-Trim can be utilized as a flashing or special transition between components. It protects against water penetration along siding.

LENGTH

10' / 20'

DIMENSIONS

Custom

FINISH

Kynar 500 ® / Galvanized

HOT KIT w/ CAULK

Hot Kit w/ Caulk helps prevent water from gathering and making it's way inside around pipe penetrations found on the roof.

LENGTH

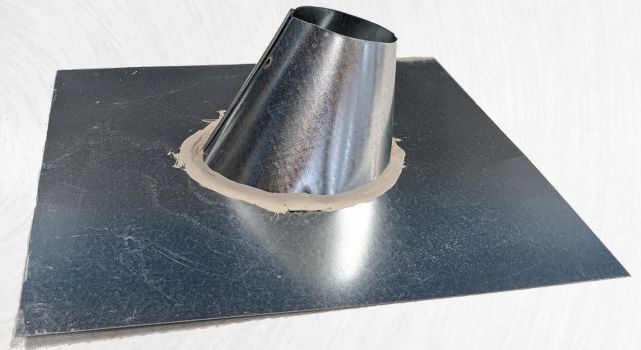
Custom

DIMENSIONS

Custom

FINISH

Kynar 500 ® / Galvanized



RVO VENT



RVO Vent provide continual airflow, helping remove overheated air and moisture from the attic and roof system.

LENGTH

Custom

DIMENSIONS

Custom

FINISH

Kynar 500 ® / Galvanized

WAREHOUSE GALLERY



WAREHOUSE



SCHECHTL 10 FT BRAKE



NTM ROLL FORMER



JORNS 20 FT BRAKE



R PANEL / U PANEL ROLLFORMER



XYZ CNC MACHINE



RVO VENT CAP



RVO VENT

WAREHOUSE GALLERY CONT.



FORSTNER SLITTER



SHOWROOM METAL



SHOWROOM ACM



FABTECH TRAINING CLASS



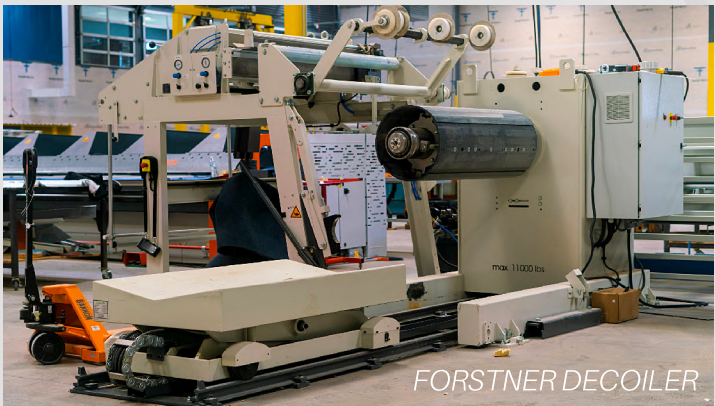
EVENT ROOM



ASSORTED INVENTORY



FABTECH OFFICE



FORSTNER DECOILER

METAL WORK GALLERY



PERFORATED ACM PANEL



WALL CLADDING



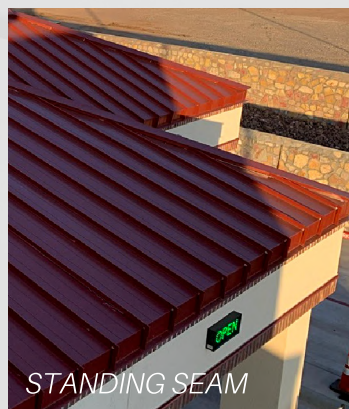
CORRUGATED PANEL



SOFFIT / CORNER / STARTER CLIP TRIM



LEADER HEAD / DOWNSPOUT / SCUPPER



STANDING SEAM



ACM PANEL



ES-1 COPING

METAL WORK GALLERY CONT.



RADIUS PANELS



ACM PANEL



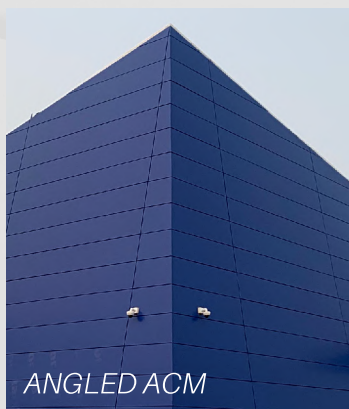
ILLUSION CLADDING



CORRUGATED PANEL + TRIM



FABTECH HQ - ACM / CORRUGATED PANELS



ANGLED ACM



FLUSH SOFFIT / ACM



FLUSH PANEL / CORRUGATED

A SPECIAL THANKS

To everyone who has been a part of Fabtech's drive from the very beginning. From the genius minds of our owners, to the never-ending effort provided by the staff in our office and field.

We appreciate the partners, clients and relationships we have created along the way. Your trust in our company is what aspires us to provide quality, innovative work.

We look forward to providing our people, our city and our nation with more product they can count on.

FOLLOW US ON



EP FABTECH

EPFABTECHMETALS.COM
1381 S DARRINGTON RD
EL PASO, TX 79928
915-775-3539