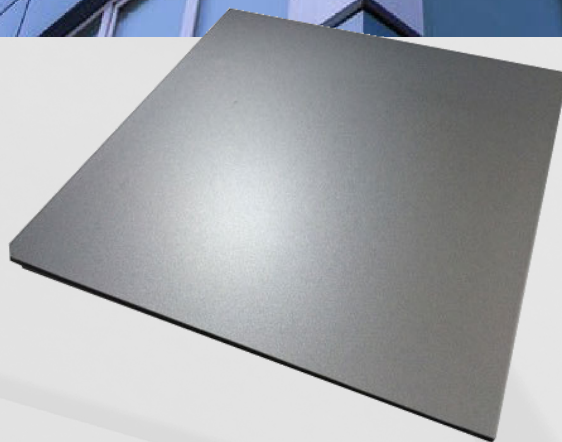
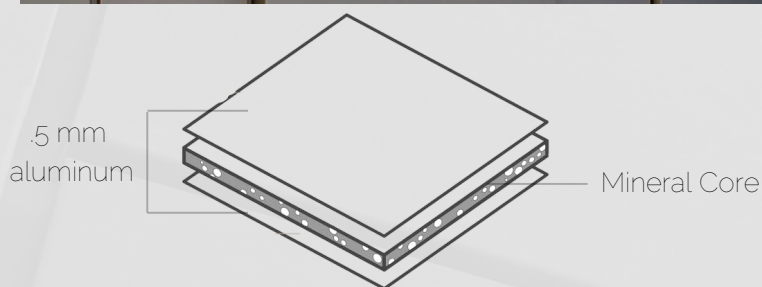
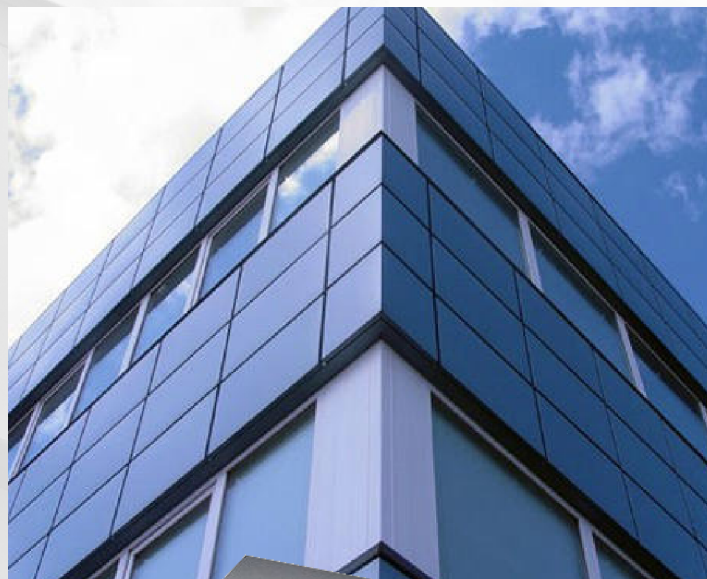


EP FABTECH ACM PANEL



ACM panels are designed for residential or commercial construction. While providing moisture protection and energy efficiency, they also provide a modern, sleek look.

Material

Aluminum facings in 0.020" nominal thickness
(Polyethylene core available in 3/4/6 mm thicknesses
(PE) Proprietary fire-resistant core available in 4mm thickness only

Specifications

Custom sizes per job requirements
Aluminum finish in standard and custom colors
(refer to color chart for color selection or contact EP Fabtech for additional color selection)

ASTM Tests

ASTM C-365	ASTM C-393	ASTM C-297
ASTM D-790	ASTM D-638	ASTM D-1781
ASTM D-732	ASTM C-518	ASTM E-90
ASTM D-648	ASTM C-273	ASTM C-272
ASTM D-696	ASTM D-635	ASTM D-1929
ASTM E-84		

ACM Panel Benefits

Withstands environmental temperature changes from -55° F to +180° F

High thermal comfort thus additional savings on gas and energy

Coefficient of linear expansion is governed by the aluminum sheet

Economical with long lasting durability

Application

EP Fabtech ACM panels may be installed in a non-sequential pattern over a solid substrate/ Application of a manufacture approved underlayment prior to panel installation over a solid substrate is recommended for moisture protection.

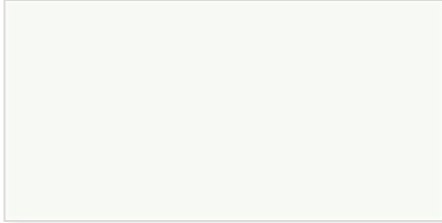
Notes:

1. Special colors and finishes available. Consult EP Fabtech Metals MFG for pricing, lead time and specifications.
2. Galvalume® is a registered trademark of BIEC International Inc.
3. Kynar 500® is a registered trademark of Arkema, Inc.
4. Contact us for other ACM work such as signs.

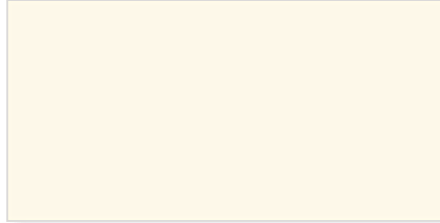
ACM COLOR CHART

Solid Color Series

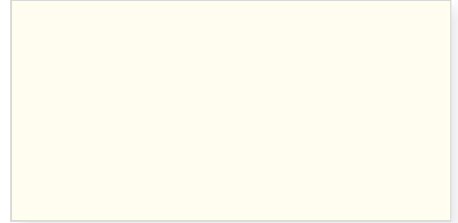
These *Duramar*® 2-coat colors consist of a 0.2 mil primer and a 0.8 mil color coat, for a nominal dry film thickness of 1.0 mil.



Regal White S-31



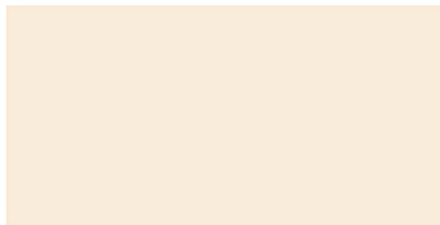
Off White S-91



Bone White S-30



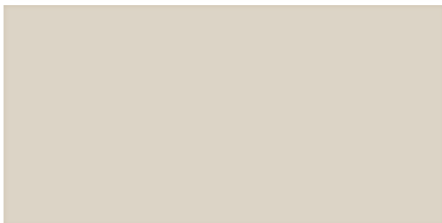
RVW White S-327



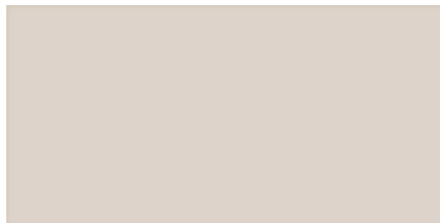
Oyster White S-70



Marble S-112



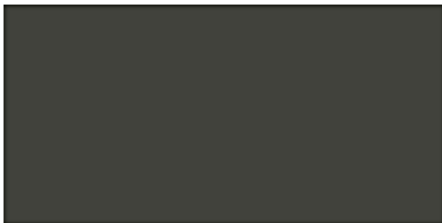
Sandstone S-84



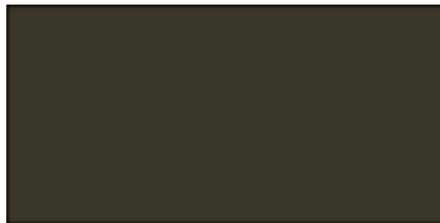
Limestone S-58



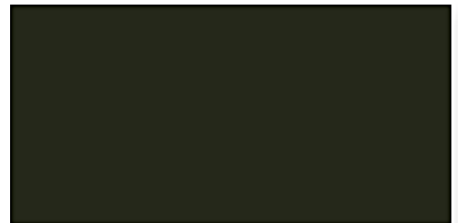
Cadet Grey S-32



Charcoal S-381



Classic Bronze S-33



Classic Black S-34



Marakesh Red S-48



Deep Sea Blue S-74

Notes:

1. Duramar® is a trademark of PPG INDUSTRIES OHIO INC
2. Custom and other colors available. Consult with Ep Fabtech Metals for pricing, lead time and specifications.

ACM COLOR CHART

Mica Color Series

These *Duranar*® 2-coat mica colors consist of a 0.2 mil primer and a 0.8 mil color coat, for a nominal dry film thickness of 1.0 mil. Mica flakes are suspended in the color coat – giving the appearance of a metallic finish.



Anodic Clear M-35



Platinum M-36



Silversmith M-115



Champagne Mica M-38



Champagne Pearl M-60



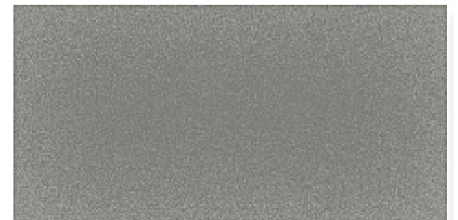
Champagne Bronze M-94



Aged Bronze M-367



Pewter Mica M-366



Medium Grey M-301

Metallic Color XL Series

These *Duranar*® 3-coat metallic colors consist of a 0.2 mil primer, a 0.8 mil color coat, and a 0.5 mil clear coat, for a nominal dry film thickness of 1.5 mils.



Silver Metallic XL-25



Gun Barrel XL-382



Pewter Metallic XL-65



Champagne Metallic XL-26



Rustic Copper Metallic XL-27



Bright Copper Metallic XL-28